

## KAL-A Flow Transmitter



### Benefits and Features

- Temperature independent 4-20 mA output
- Optional setpoint switch
- NPT and 3-A compliant sanitary fittings
- Compact Design
- Operate over a wide viscosity range
- No moving parts
- Extremely low pressure loss
- Easy to operate
- Insensitive to dirt

### General Description

The KAL-A uses the calorimetric principle to continuously monitor the flow of low viscosity water-based media. Flow rate is transmitted via a 4-20 mA output while an optional PNP switch provides an alarm function. The transmission capability of the KAL-A is made possible by the high degree of temperature stability provided by its "intelligent" microprocessor based design.

Integrating the heating measuring functions into a single enclosed tip allows the probe to be machined into a single, continuous, protrusion-free surface. The absence of protrusions prevents contaminant from building up on the probe tip.

These design enhancements improve the KAL's performance in two ways:

1. The KAL's sensing stability is increased because contaminant cannot thermally isolate the probe from the liquid.
2. System down-time associated with probe cleaning is dramatically decreased.

### Specifications

#### Specifications

<b>Sensing Range</b>	0.05 - 2 m/s	<b>Housing</b>	
<b>Media:</b>	Water-based liquids 60 cSt max.	<b>Standard:</b>	NEMA 4 (Nylon®)
<b>Response Time</b>		<b>Sanitary:</b>	NEMA 4 (Nylon®)
<b>Typical:</b>	5.6 seconds	<b>Optional:</b>	Explosion Proof (Al) Class I & II, Groups C & D
<b>Fittings</b>		<b>Analog Output</b>	
<b>Standard:</b>	1/2" or 3/4" NPT	<b>Signal Type:</b>	4-20 mA, 3-wire into 500 Ω max.
<b>Sanitary:</b>	1 1/2" Tri-Clamp®	<b>Linearity:</b>	±10% of full scale
<b>Explosion Proof:</b>	1/2" or 3/4" NPT	<b>Repeatability:</b>	±1% of full scale
<b>Flow Trend Indicator:</b>	8 Red LEDs	<b>Zero Adjustment:</b>	0-75% of range
<b>Maximum Pressure:</b>	1450 PSIG	<b>Span Adjustment:</b>	25-100% of range
<b>Sanitary:</b>	600 PSIG	<b>Switch Characteristics</b>	
<b>Temperature</b>		<b>Adjustment:</b>	by Potentiometer
<b>Operating:</b>	0°F to 176°F	<b>Selectable Output:</b>	PNP open collector
<b>CIP:</b>	280°F	<b>Max. Current:</b>	400 mA
<b>Wetted Parts</b>		<b>Max. Voltage:</b>	24 VDC
<b>Standard:</b>	304 SS or 316-Ti SS	<b>Status Indicator:</b>	Bi-colored LED
<b>Sanitary:</b>	316-Ti SS	<b>Power Requirements</b>	
<b>Explosion Proof:</b>	316-Ti SS	<b>Supply Voltage:</b>	24 ± 2 VDC
		<b>Current Draw:</b>	300 mA max.

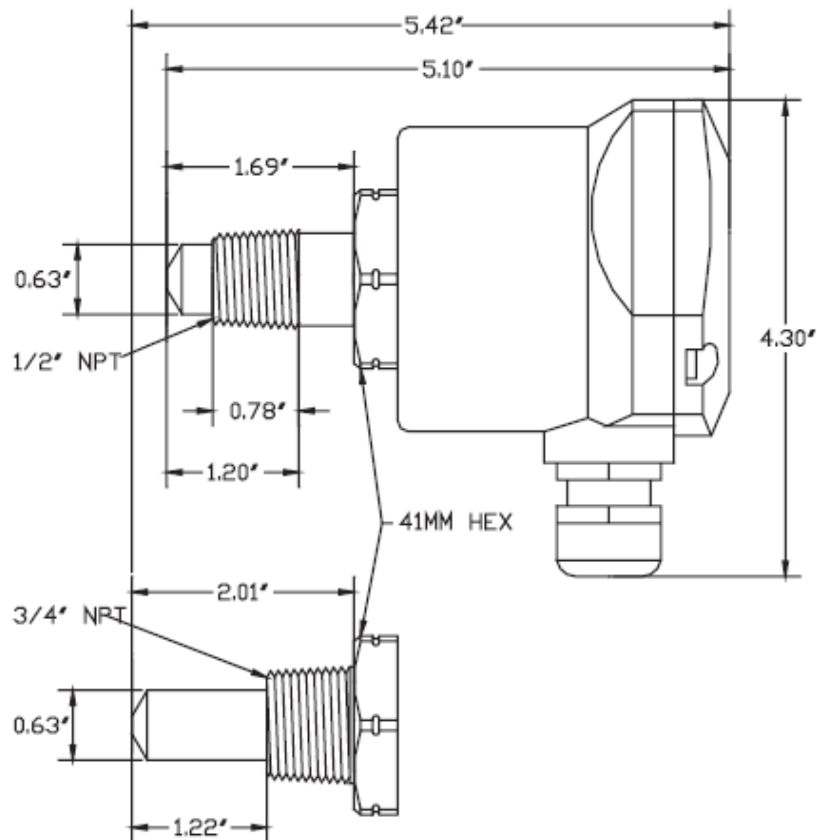
## KAL-A Flow Transmitter

### Ordering Information

#### KAL-A Ordering Information

Model	Wetted Parts	1/2" Model	3/4" Model
Standard	304 SS	KAL-7215	-
Standard 316-Ti SS	316-Ti SS	KAL-7315	KAL-7320
Explosion Proof	316-Ti SS	KAL-7315-EX	KAL-7320EX
Sanitary	316-Ti SS	KAL-7340-S	
<b>Options</b>			
PNP Switch		Suffix: "P"	
Micro DC Connector with 6 ft. of cable		Suffix: "M12"	

### Dimensions



**KAL-A Flow Transmitter**

**↔ Dimensions**

