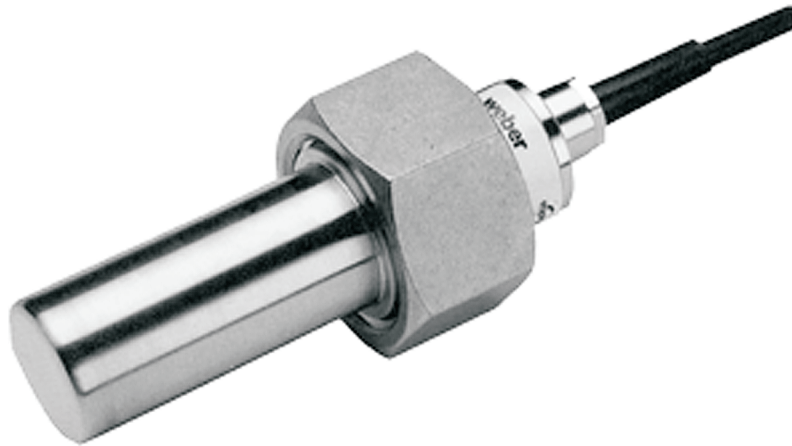




flow-captor



flow-captor Type 4114.73

The flow-captor type 4114.30 / 4115.30 is a flow switch for industrial applications which can be installed into any pipe, allowing flow-sensing with minimum obstruction of the flow stream. As the housing and sensor surface is of stainless steel (WN 1.4305) this small, compact flow-captor is very resistant to aggressive media.

Available for AC and DC applications (voltage range from 90 to 265 V AC/DC), the flow-captor type 4114.73 operates accordingly to a new calorimetric principle, providing a wide measuring range.

The measurement accuracy at low flow rates is considerably better than all other contending measurement technologies. Because of the very short integration time, even at low flow, this analog flow-captor is ideally suited for quick control loops.

Completely epoxy resin encapsulated, this flow-captor is a compact, rugged, shock and vibration resistant flow sensor with proven reliability and long-term stability, even under the harshest environmental conditions.

- AC or DC Operation.
- High accuracy under low flow conditions.
- Simple installation by union nut.
- Rugged stainless steel construction.
- LED-display for set-point.
- **ISO 9002** certified manufacturing.
- **CE** approval

Sensing-Data

Media	liquid and pasty (aggressive media on request)
Measuring range	adjustable from 2 - 200 cm/s (related to water)
Adjustable potentiometer	logarithmical to flow rate
Accuracy	N/A
Repeatability	< 1%
Hysteresis	< 15%

flow-captor

Type 4114.73

Compact flow switch

Electrical Data

Operating voltage	90V - 265V AC / DC
Switching current	max. 150 mA
Power consumption	max. 3 W
Electrical connection	2 m moulded oilflex cable, 4 x 0.5 mm ²
LED	2-colored : green: flow rate > Setpoint red: flow rate < Setpoint

Mechanical Data

Protection class	IP 65 (DIN 40050)
Sensor head and housing	stainless steel WN 1.4305 (V2A, 303 Ti), alternative: WN 1.4571 (V4A, 316 Ti)
Sensor head sealing	FP (VITON)
Thread of union nut	G 1 ¼ A SW 50 mm DIN 259 ISO 228
Pressure	max. 30 bar (435 PSI)
Medium temperature	-10°C to +80 °C (14 F to 176 F)
Ambient temperature	-10°C to +60 °C (14 F to 140 F)

Sensor Data

Measuring range	adjustable from 2 to 200 cm/s (related to water)
Adjustable potentiometer	logarithmical to flow rate
Accuracy	N/A
Repeatability	< 1%
Hysteresis	< 15%

